

Demographics

Population, July 2005	786,651	1
Population, 2000 Census	695,454	1
Population, 1990 Census	511,211	1
Percent population change, 1990-2000	36.0	7
Percent population change, NC, 1990-2000	21.4	

County Rank



Workforce & Education

Employment, Dec 2005	420,850	1
Unemployed, Dec 2005	18,214	1
Percent unemployed, Dec 2005	4.1	79
Percent unemployed, 2004	5.1	66
Percent unemployed, NC, Dec 2005	4.7	
Percent unemployed, NC, 2004	5.5	
Percent high school graduates, 2000	86.2	5
Percent high school graduates, NC, 2000	78.1	
Average SAT score, 2005	1,004	37
Average SAT score, NC, 2005	1,010	
Percent bachelor's degree or higher, 2000	37.1	4
Percent bachelor's degree or higher, NC, 2000	22.5	

Taxes, Sales & Services

Property taxes/\$100 Value	\$0.8368
Taxable sales (Mil \$, Oct 05)	\$906.8
Taxable sales (Mil \$, FY 04-05)	\$18,884.3
Number of physicians, 2003	1,916
Population/physician ratio, 2004	402
Population/RN ratio, 2004	86
Population/dentist ratio, 2004	1,607
Tier designation, 2005	5
Partnership Region	Charlotte
Licensed Child Care Facilities	912
Child Care Capacity	50,977

Income, Housing & Poverty

Average weekly wage per employee, Second Quarter 2005	\$879	2
Median household income, 2000	\$50,579	3
Per capita personal income, 1990	\$23,262	1
Per capita personal income, 2003	\$38,376	1
Per capita personal income, NC, 2003	\$28,071	
Median value of owner-occupied housing units, 2000	\$130,881	3
Median value of owner-occupied housing units, NC, 2000	\$108,300	
Percent in poverty, 2000	9.2	89
Percent in poverty, NC, 2000	12.3	

Notes: Data are the latest available at the date the profile was prepared. Demographics are from U.S. Census. Workforce & Education are from NC Employment Security Commission, U.S. Census, and NC Dept. of Public Instruction respectively; county unemployment rates are seasonally unadjusted. Average wage are from ESC's "Insured Employment and Wages in NC for Private Industry by Sector (2 digit) which is based on the Current Population Survey." Income, Housing & Poverty are from U.S. Bureau of Economic Analysis and the U.S. Census, respectively. Jobs and Investments are from NC Dept. of Commerce. Closings & Layoffs are from the NC Employment Security Commission. Private Sector Employment are from NCEC's "Insured Employment and Wages in NC for Industry by Sector (2 digit)" series; * indicates data not available or suppressed for confidentiality reasons. Taxes, Sales & Services are from the NC Dept. of Revenue and the Cecil G. Sheps Center for Health Services Research, UNC-Chapel Hill, respectively. **County Ranking 1=highest.

Announced Jobs & Investments

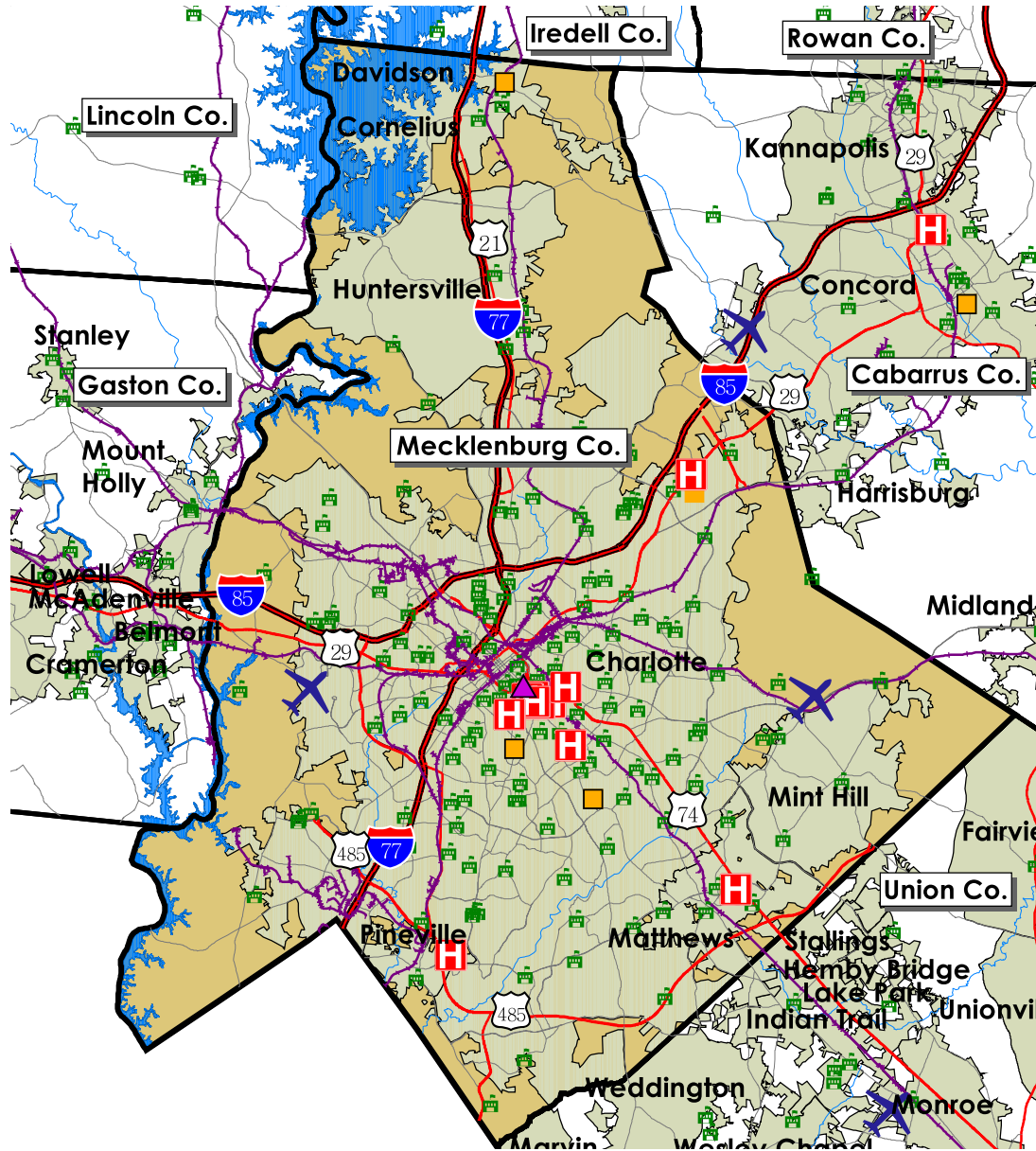
Jobs announced, 2004	3348
Jobs announced, Thru Dec 2005	12439
Total investment announced, 2004	\$907,040,260
Total investment announced, Thru Dec 2005	\$2,235,974,124

Announced Closings & Layoffs

Number of affected establishments, 2004	50
Number of affected establishments, Thru Dec 2005	48
Job losses, 2004	2,097
Job losses, Thru Dec 2005	4,515

	Mecklenburg			North Carolina		
	Avg Emp	% Total	Avg Wkly Wage	Avg Emp	% Total	Avg Wkly Wage
Total All Industries	518,986	100.0	\$879	3,855,939	100.0	\$665
Total Government	59,016	11.4	\$898	648,789	16.8	\$786
Total Private Industry	459,970	88.6	\$886	3,207,150	83.2	\$659
Agriculture Forestry Fishing & Hunting	994	0.2	\$634	29,775	0.8	\$494
Mining	*	*	*	3,466	0.1	\$935
Utilities	1,759	0.3	\$1,369	14,293	0.4	\$1,164
Construction	31,787	6.1	\$855	232,605	6.0	\$652
Manufacturing	35,255	6.8	\$1,042	571,082	14.8	\$795
Wholesale Trade	35,030	6.7	\$1,019	170,039	4.4	\$945
Retail Trade	53,075	10.2	\$522	447,268	11.6	\$440
Transportation and Warehousing	30,487	5.9	\$856	136,682	3.5	\$736
Information	23,890	4.6	\$1,117	78,304	2.0	\$949
Finance and Insurance	50,133	9.7	\$1,397	142,076	3.7	\$1,074
Real Estate and Rental and Leasing	9,550	1.8	\$807	50,353	1.3	\$604
Professional and Technical Services	31,465	6.1	\$1,151	160,686	4.2	\$995
Management of Companies and Enterprises	19,542	3.8	\$1,925	63,337	1.6	\$1,379
Administrative and Waste Services	39,574	7.6	\$549	223,206	5.8	\$459
Educational Services	28,842	5.6	\$692	345,581	9.0	\$652
Health Care and Social Assistance	47,485	9.1	\$831	484,264	12.6	\$676
Arts, Entertainment and Recreation	7,942	1.5	\$803	52,522	1.4	\$454
Accommodation and Food Services	40,607	7.8	\$305	315,356	8.2	\$243
Other Services Ex. Public Admin	15,208	2.9	\$488	100,075	2.6	\$441
Public Administration	14,818	2.9	\$894	220,977	5.7	\$690
Unclassified	1,372	0.3	\$686	15,152	0.4	\$512

Trends Profile Map Mecklenburg County



Legend

-  Public Schools
-  Airports
-  Hospitals
-  Colleges and Universities
-  Community Colleges
-  Rail Lines
-  Interstate highways
-  US Highways
-  State and County Highways
-  Major Rivers and Streams
-  Major Waterbodies
-  Municipal Boundaries



Mecklenburg County

Employment Characteristics

Reporting Quarter: 4th Quarter 2005

County Profile Contact (919) 715-6374

Economic Development Contact (919) 733-4977

Employment Security Commission (919) 733-2936

Top Manufacturers (2nd Quarter 2005)

CONTINENTAL TIRE NORTH AMERICA INC
INTERNATIONAL BUSINESS MACHINES
LANCE MFG LLC
MICROSOFT CORP
SOLETRON USA INC
INGERSOLL RAND FINANCIAL SERVICES C
FRITO LAY INC
SIEMENS WESTINGHOUSE POWER
WEYERHAEUSER COMPANY
CHARLOTTE PIPE & FOUNDRY COMPANY

Employment Range

1,000+
1,000+
1,000+
1,000+
500-999
500-999
500-999
500-999
500-999
250-499



Top Non-Manufacturing Employers (2nd Quarter 2005)

CHARLOTTE MECKLENBURG BOARD OF ED
CAROLINAS HEALTH CARE SYSTEMS
WACHOVIA BANK
BANK OF AMERICA NA
CITY OF CHARLOTTE
U S AIR INC
MECKLENBURG COUNTY HUMAN RESOURCES
DUKE ENERGY CORPORATION
HARRIS TEETER INC
PRESBYTERIAN HOSPITAL

Employment Range

1,000+
1,000+
1,000+
1,000+
1,000+
1,000+
1,000+
1,000+
1,000+
1,000+

Industry

Education and Health Services
Professional and Business Services
Financial Activities
Financial Activities
Public Administration
Trade, Transportation, and Utilities
Public Administration
Trade, Transportation, and Utilities
Trade, Transportation, and Utilities
Education and Health Services